



Location: CMA1b - Oil Street Site Office

Report on 24-hour TSP monitoring

Action Level ($\mu\text{g}/\text{m}^3$) - 176.7

Limit Level ($\mu\text{g}/\text{m}^3$) - 260

Date	Sampling Time	Weather Condition	Filter paper no.	Filter Weight, g		Elapse Time, hr		Sampling Time, hr	Flow Rate, m^3/min			Total Volume, m^3	TSP Level, $\mu\text{g}/\text{m}^3$
				Initial	Final	Initial	Final		Initial, Q_{si}	Final, Q_{sf}	Average		
28-May-15	8:00	Fine	012114	2.8002	2.9395	6432.45	6456.45	24.00	1.12	1.12	1.12	1611	86.5
3-Jun-15	8:00	Fine	012187	2.8388	2.9158	6459.53	6483.53	24.00	1.17	1.17	1.17	1686	45.7
8-Jun-15	8:00	Cloudy	012197	2.7976	2.8800	6486.54	6510.54	24.00	1.17	1.17	1.17	1685	48.9
12-Jun-15	8:00	Cloudy	012134	2.8251	2.9144	6513.54	6537.54	24.00	1.14	1.14	1.14	1639	54.5
18-Jun-15	8:00	Fine	012324	2.8251	2.9285	6540.54	6564.54	24.00	1.13	1.13	1.13	1632	63.3
23-Jun-15	8:00	Rainy	011970	2.8281	2.9435	6567.54	6591.54	24.00	1.14	1.14	1.14	1641	70.3

Report on 1-hour TSP monitoring

Action Level ($\mu\text{g}/\text{m}^3$) - 320.1

Limit Level ($\mu\text{g}/\text{m}^3$) - 500

Date	Sampling Time	Weather Condition	Filter paper no.	Filter Weight, g		Elapse Time, hr		Sampling Time, hr	Flow Rate, m^3/min			Total Volume, m^3	TSP Level, $\mu\text{g}/\text{m}^3$
				Initial	Final	Initial	Final		Initial, Q_{si}	Final, Q_{sf}	Average		
29-May-15	8:01	Fine	012124	2.8240	2.8304	6456.53	6457.53	1.00	1.12	1.12	1.12	67	95.3
29-May-15	9:02	Fine	012176	2.8307	2.8396	6457.53	6458.53	1.00	1.12	1.12	1.12	67	132.5
29-May-15	10:05	Fine	012178	2.8278	2.8341	6458.53	6459.53	1.00	1.12	1.12	1.12	67	93.8
4-Jun-15	11:00	Fine	012191	2.8013	2.8056	6483.53	6484.53	1.00	1.17	1.17	1.17	70	61.2
4-Jun-15	13:00	Fine	012195	2.8133	2.8205	6484.53	6485.53	1.00	1.17	1.17	1.17	70	102.5
4-Jun-15	14:02	Fine	012166	2.8367	2.8370	6485.53	6486.53	1.00	1.17	1.17	1.17	70	4.3
9-Jun-15	8:40	Cloudy	012200	2.8186	2.8268	6510.54	6511.54	1.00	1.17	1.17	1.17	70	116.9
9-Jun-15	9:43	Cloudy	012128	2.8227	2.8294	6511.54	6512.54	1.00	1.17	1.17	1.17	70	95.5
9-Jun-15	10:47	Cloudy	012131	2.8314	2.8360	6512.54	6513.54	1.00	1.17	1.17	1.17	70	65.6
13-Jun-15	8:02	Cloudy	011849	2.7257	2.7327	6537.54	6538.54	1.00	1.14	1.14	1.14	68	102.6
13-Jun-15	9:04	Cloudy	011774	2.8218	2.8303	6538.54	6539.54	1.00	1.14	1.14	1.14	68	124.6
13-Jun-15	10:06	Cloudy	011981	2.8285	2.8361	6539.54	6540.54	1.00	1.14	1.14	1.14	68	111.4
19-Jun-15	8:05	Fine	012319	2.8330	2.8405	6564.54	6565.54	1.00	1.13	1.13	1.13	68	110.2
19-Jun-15	9:07	Fine	012316	2.8004	2.8072	6565.54	6566.54	1.00	1.13	1.13	1.13	68	100.0
19-Jun-15	10:10	Fine	012340	2.8259	2.8338	6566.54	6567.54	1.00	1.13	1.13	1.13	68	116.1
24-Jun-15	8:10	Rainy	012296	2.8044	2.8096	6591.54	6592.54	1.00	1.14	1.14	1.14	68	76
24-Jun-15	9:12	Rainy	012304	2.8176	2.8218	6592.54	6593.54	1.00	1.14	1.14	1.14	68	61
24-Jun-15	10:15	Rainy	012339	2.8069	2.8092	6593.54	6594.54	1.00	1.14	1.14	1.14	68	34



Location: CMA2a - Causeway Bay Community Centre

Report on 24-hour TSP monitoring
 Action Level ($\mu\text{g}/\text{m}^3$) - 169.5
 Limit Level ($\mu\text{g}/\text{m}^3$) - 260

Date	Sampling Time	Weather Condition	Filter paper no.	Filter Weight, g		Elapse Time, hr		Sampling Time, hr	Flow Rate, m^3/min			Total Volume, m^3	TSP Level, $\mu\text{g}/\text{m}^3$
				Initial	Final	Initial	Final		Initial, Q_{si}	Final, Q_{sf}	Average		
28-May-15	8:00	Fine	012113	2.8033	2.8772	16088.87	16112.87	24.00	1.06	1.17	1.11	1602	46.1
3-Jun-15	8:00	Fine	012189	2.8127	2.8650	16115.87	16139.87	24.00	1.17	1.17	1.17	1684	31.1
8-Jun-15	8:00	Cloudy	012196	2.8029	2.8382	16142.87	16166.87	24.00	1.06	1.06	1.06	1523	23.2
12-Jun-15	8:00	Cloudy	012133	2.8362	2.8860	16169.87	16193.87	24.00	1.16	1.16	1.16	1667	29.9
18-Jun-15	8:00	Fine	011990	2.8362	2.9092	16196.95	16220.95	24.00	1.24	1.24	1.24	1790	40.8
23-Jun-15	8:00	Rainy	011971	2.8438	2.9095	16223.95	16247.95	24.00	1.25	1.25	1.25	1797	36.6

Report on 1-hour TSP monitoring
 Action Level ($\mu\text{g}/\text{m}^3$) - 323.4
 Limit Level ($\mu\text{g}/\text{m}^3$) - 500

Date	Sampling Time	Weather Condition	Filter paper no.	Filter Weight, g		Elapse Time, hr		Sampling Time, hr	Flow Rate, m^3/min			Total Volume, m^3	TSP Level, $\mu\text{g}/\text{m}^3$
				Initial	Final	Initial	Final		Initial, Q_{si}	Final, Q_{sf}	Average		
29-May-15	8:05	Fine	012125	2.8297	2.8349	16112.87	16113.87	1.00	1.17	1.17	1.17	70	74.2
29-May-15	9:07	Fine	012177	2.8237	2.8287	16113.87	16114.87	1.00	1.11	1.11	1.11	67	74.9
29-May-15	10:09	Fine	012179	2.8371	2.8391	16114.87	16115.87	1.00	1.11	1.11	1.11	67	30.0
4-Jun-15	13:00	Fine	012165	2.8054	2.8069	16139.87	16140.87	1.00	1.17	1.17	1.17	70	21.4
4-Jun-15	14:05	Fine	012097	2.8288	2.8298	16140.87	16141.87	1.00	1.17	1.17	1.17	70	14.3
4-Jun-15	15:09	Fine	012096	2.8299	2.8305	16141.87	16142.87	1.00	1.17	1.17	1.17	70	8.6
9-Jun-15	8:30	Cloudy	012199	2.8094	2.8147	16166.87	16167.87	1.00	1.17	1.17	1.17	70	75.6
9-Jun-15	9:35	Cloudy	012127	2.8416	2.8465	16167.87	16168.87	1.00	1.17	1.17	1.17	70	69.9
9-Jun-15	10:37	Cloudy	012130	2.8454	2.8478	16168.87	16169.87	1.00	1.17	1.17	1.17	70	34.2
13-Jun-15	8:05	Cloudy	011850	2.7384	2.7422	16193.87	16194.87	1.00	1.16	1.16	1.16	69	54.7
13-Jun-15	9:08	Cloudy	011983	2.8256	2.8274	16194.87	16195.87	1.00	1.16	1.16	1.16	69	25.9
13-Jun-15	10:10	Cloudy	011988	2.8183	2.8214	16195.87	16196.87	1.00	1.16	1.16	1.16	69	44.7
19-Jun-15	8:02	Fine	012320	2.8037	2.8106	16220.95	16221.95	1.00	1.24	1.24	1.24	75	92.5
19-Jun-15	9:04	Fine	012318	2.8304	2.8381	16221.95	16222.95	1.00	1.24	1.24	1.24	75	103.2
19-Jun-15	10:06	Fine	012341	2.8272	2.8354	16222.95	16223.95	1.00	1.24	1.24	1.24	75	109.9
24-Jun-15	8:04	Rainy	012295	2.8011	2.8054	16247.95	16248.95	1.00	1.25	1.25	1.25	75	57.5
24-Jun-15	9:05	Rainy	012291	2.8111	2.8185	16248.95	16249.95	1.00	1.25	1.25	1.25	75	98.9
24-Jun-15	10:07	Rainy	012306	2.8250	2.8297	16249.95	16250.95	1.00	1.25	1.25	1.25	75	62.8



Location: CMA3a - CWB PRE Site Office Area

Report on 24-hour TSP monitoring
Action Level ($\mu\text{g}/\text{m}^3$) - 171
Limit Level ($\mu\text{g}/\text{m}^3$) - 260

Date	Sampling Time	Weather Condition	Filter paper no.	Filter Weight, g		Elapse Time, hr		Sampling Time, hr	Flow Rate, m^3/min			Total Volume, m^3	TSP Level, $\mu\text{g}/\text{m}^3$
				Initial	Final	Initial	Final		Initial, Q_{si}	Final, Q_{sf}	Average		
28-May-15	8:00	Fine	012122	2.8214	2.9302	3530.57	3554.57	24.00	1.23	1.23	1.23	1776	61.3
3-Jun-15	8:00	Fine	011871	2.7235	2.7800	30557.57	30581.57	24.00	1.18	1.18	1.18	1701	33.2
8-Jun-15	8:00	Cloudy	012008	2.8059	2.8916	3584.57	3608.57	24.00	1.23	1.23	1.23	1777	48.2
12-Jun-15	8:00	Cloudy	011749	2.8222	2.8716	3611.57	3635.57	24.00	1.13	1.12	1.13	1620	30.5
18-Jun-15	8:00	Fine	012323	2.8184	2.9415	3638.68	3662.68	24.00	1.17	1.17	1.17	1691	72.8
23-Jun-15	8:00	Rainy	011964	2.8344	2.9278	3665.68	3689.68	24.00	1.18	1.18	1.18	1698	55.0

Report on 1-hour TSP monitoring
Action Level ($\mu\text{g}/\text{m}^3$) - 311.3
Limit Level ($\mu\text{g}/\text{m}^3$) - 500

Date	Sampling Time	Weather Condition	Filter paper no.	Filter Weight, g		Elapse Time, hr		Sampling Time, hr	Flow Rate, m^3/min			Total Volume, m^3	TSP Level, $\mu\text{g}/\text{m}^3$
				Initial	Final	Initial	Final		Initial, Q_{si}	Final, Q_{sf}	Average		
29-May-15	9:31	Fine	011595	2.7258	2.7317	3554.57	3555.57	1.00	1.26	1.26	1.26	75	78.2
29-May-15	10:38	Fine	011867	2.7262	2.7330	3556.57	3557.57	1.00	1.26	1.26	1.26	75	90.1
29-May-15	13:00	Fine	011869	2.7132	2.7242	3557.57	3558.57	1.00	1.26	1.26	1.26	75	145.8
4-Jun-15	8:30	Fine	012005	2.8141	2.8275	30581.57	30582.57	1.00	1.26	1.26	1.26	76	177.4
4-Jun-15	9:34	Fine	012006	2.8013	2.8113	30582.57	30583.57	1.00	1.26	1.26	1.26	76	132.4
4-Jun-15	10:40	Fine	012007	2.8047	2.8119	30583.57	30584.57	1.00	1.26	1.26	1.26	76	95.3
9-Jun-15	8:58	Cloudy	011755	2.7977	2.8165	3608.57	3609.57	1.00	1.20	1.20	1.20	72	260.9
9-Jun-15	10:02	Cloudy	011753	2.8303	2.8403	3609.57	3610.57	1.00	1.20	1.20	1.20	72	138.8
9-Jun-15	13:00	Cloudy	011751	2.8129	2.8231	3610.57	3611.57	1.00	1.20	1.20	1.20	72	141.6
13-Jun-15	8:05	Cloudy	011777	2.8084	2.8143	3635.57	3636.57	1.00	1.13	1.13	1.13	68	86.9
13-Jun-15	9:09	Cloudy	011773	2.8094	2.8148	3636.61	3637.61	1.00	1.20	1.20	1.20	72	75.2
13-Jun-15	10:20	Cloudy	012327	2.8241	2.8283	3637.61	3638.61	1.00	1.20	1.20	1.20	72	58.5
19-Jun-15	8:59	Fine	011974	2.8431	2.8571	3662.68	3663.68	1.00	1.19	1.19	1.19	72	195.4
19-Jun-15	10:10	Fine	011976	2.8382	2.8467	3663.68	3664.68	1.00	1.16	1.16	1.16	70	122.0
19-Jun-15	13:00	Fine	011978	2.8296	2.8400	3664.68	3665.68	1.00	1.19	1.19	1.19	72	145.1
24-Jun-15	9:11	Rainy	011598	2.7175	2.7254	3689.68	3690.68	1.00	1.13	1.13	1.13	68	116.1
24-Jun-15	10:15	Rainy	011596	2.7309	2.7353	3690.68	3691.68	1.00	1.17	1.17	1.17	70	62.9
24-Jun-15	13:00	Rainy	012286	2.8133	2.8195	3691.68	3692.68	1.00	1.13	1.13	1.13	68	91.1



Location: CMA4a - SPCA

Report on 24-hour TSP monitoring
Action Level ($\mu\text{g}/\text{m}^3$) - 171.2
Limit Level ($\mu\text{g}/\text{m}^3$) - 260

Date	Sampling Time	Weather Condition	Filter paper no.	Filter Weight, g		Elapse Time, hr		Sampling Time, hr	Flow Rate, m^3/min			Total Volume, m^3	TSP Level, $\mu\text{g}/\text{m}^3$
				Initial	Final	Initial	Final		Initial, Q_{si}	Final, Q_{sf}	Average		
28-May-15	8:00	Fine	012123	2.8214	2.9236	20362.77	20386.77	24.00	1.29	1.29	1.29	1854	55.1
3-Jun-15	8:00	Fine	011870	2.7240	2.7842	20389.77	20413.77	24.00	1.29	1.29	1.29	1856	32.4
8-Jun-15	8:00	Cloudy	011399	2.7431	2.8053	20416.77	20440.77	24.00	1.29	1.29	1.29	1855	33.5
12-Jun-15	8:00	Cloudy	011750	2.8178	2.8897	20443.77	20467.77	24.00	1.23	1.23	1.23	1773	40.6
19-Jun-15	14:18	Fine	011965	2.8292	2.9045	20473.90	20497.90	24.00	1.23	1.23	1.23	1768	42.6
23-Jun-15	8:00	Rainy	011730	2.8148	2.9261	20497.90	20521.90	24.00	1.23	1.23	1.23	1775	62.7

Remarks: Due to interruption of electricity, the 24hr TSP was rescheduled from 18 June 2015 to 19 June 2015.

Report on 1-hour TSP monitoring
Action Level ($\mu\text{g}/\text{m}^3$) - 312.5
Limit Level ($\mu\text{g}/\text{m}^3$) - 500

Date	Sampling Time	Weather Condition	Filter paper no.	Filter Weight, g		Elapse Time, hr		Sampling Time, hr	Flow Rate, m^3/min			Total Volume, m^3	TSP Level, $\mu\text{g}/\text{m}^3$
				Initial	Final	Initial	Final		Initial, Q_{si}	Final, Q_{sf}	Average		
29-May-15	9:22	Fine	011897	2.7096	2.7153	20386.77	20387.77	1.00	1.29	1.29	1.29	77	73.8
29-May-15	10:25	Fine	011594	2.7284	2.7339	20387.77	20388.77	1.00	1.29	1.29	1.29	77	71.2
29-May-15	13:00	Fine	011868	2.7193	2.7249	20388.77	20389.77	1.00	1.29	1.29	1.29	77	72.5
4-Jun-15	8:12	Fine	012010	2.8308	2.8354	20413.77	20414.77	1.00	1.29	1.29	1.29	77	59.5
4-Jun-15	9:17	Fine	011397	2.7340	2.7383	20414.77	20415.77	1.00	1.29	1.29	1.29	77	55.6
4-Jun-15	10:22	Fine	011398	2.7336	2.7386	20415.77	20416.77	1.00	1.29	1.29	1.29	77	64.7
9-Jun-15	8:44	Cloudy	011756	2.8074	2.8112	20440.77	20441.77	1.00	1.29	1.29	1.29	77	49.2
9-Jun-15	9:49	Cloudy	011754	2.8137	2.8219	20441.77	20442.77	1.00	1.29	1.29	1.29	77	106.1
9-Jun-15	10:53	Cloudy	011752	2.8186	2.8246	20442.77	20443.77	1.00	1.29	1.29	1.29	77	77.7
13-Jun-15	8:05	Cloudy	011776	2.8245	2.8274	20467.77	20468.77	1.00	1.23	1.23	1.23	74	39.3
13-Jun-15	9:15	Cloudy	011984	2.8330	2.8376	20468.77	20469.77	1.00	1.23	1.23	1.23	74	62.3
13-Jun-15	10:25	Cloudy	011987	2.8187	2.8225	20469.77	20470.77	1.00	1.23	1.23	1.23	74	51.5
19-Jun-15	8:47	Fine	012307	2.8153	2.8196	20470.90	20471.90	1.00	1.23	1.23	1.23	74	58.4
19-Jun-15	9:58	Fine	011975	2.8259	2.8334	20471.90	20472.90	1.00	1.23	1.23	1.23	74	101.9
19-Jun-15	13:00	Fine	011977	2.8468	2.8533	20472.90	20473.90	1.00	1.23	1.23	1.23	74	88.3
24-Jun-15	8:10	Rainy	011599	2.7350	2.7408	20521.90	20522.90	1.00	1.23	1.23	1.23	74	78.5
24-Jun-15	10:03	Rainy	011597	2.7205	2.7269	20522.90	20523.90	1.00	1.23	1.23	1.23	74	86.6
24-Jun-15	13:00	Rainy	011906	2.7427	2.7518	20523.90	20524.90	1.00	1.23	1.23	1.23	74	123.1



Location: CMA5b - Pedestrian Plaza

Report on 24-hour TSP monitoring

Action Level ($\mu\text{g}/\text{m}^3$) - 181
Limit Level ($\mu\text{g}/\text{m}^3$) - 260

Date	Sampling Time	Weather Condition	Filter paper no.	Filter Weight, g		Elapse Time, hr		Sampling Time, hr	Flow Rate, m^3/min			Total Volume, m^3	TSP Level, $\mu\text{g}/\text{m}^3$
				Initial	Final	Initial	Final		Initial, Q_{si}	Final, Q_{sf}	Average		
28-May-15	8:00	Fine	012121	2.8382	2.9175	4838.77	4862.77	24.00	0.89	0.89	0.89	1283	61.8
3-Jun-15	8:00	Fine	012190	2.7975	2.8556	4865.77	4889.77	24.00	0.99	0.99	0.99	1422	40.9
8-Jun-15	8:00	Cloudy	011757	2.8347	2.9080	4892.77	4916.77	24.00	1.06	1.06	1.06	1528	48.0
12-Jun-15	8:00	Cloudy	011999	2.8062	2.8762	4919.78	4943.78	24.00	1.01	1.01	1.01	1455	48.1
23-Jun-15	8:00	Rainy	012293	2.8049	2.8690	4960.81	4984.81	24.00	0.99	0.98	0.99	1419	45.2
24-Jun-15	17:32	Rainy	012299	2.8136	2.8563	4987.82	5011.82	24.00	0.96	0.96	0.96	1381	30.9

Remarks: Due to interruption of electricity, the 24hr TSP was rescheduled from 18 and 23 June 2015 to 23 and 24 June 2015 respectively.

Report on 1-hour TSP monitoring

Action Level ($\mu\text{g}/\text{m}^3$) - 332
Limit Level ($\mu\text{g}/\text{m}^3$) - 500

Date	Sampling Time	Weather Condition	Filter paper no.	Filter Weight, g		Elapse Time, hr		Sampling Time, hr	Flow Rate, m^3/min			Total Volume, m^3	TSP Level, $\mu\text{g}/\text{m}^3$
				Initial	Final	Initial	Final		Initial, Q_{si}	Final, Q_{sf}	Average		
29-May-15	10:50	Fine	012182	2.8462	2.8506	4862.77	4863.77	1.00	0.92	0.92	0.92	55	79.5
29-May-15	13:00	Fine	012186	2.8416	2.8465	4863.77	4864.77	1.00	0.92	0.92	0.92	55	88.5
29-May-15	14:15	Fine	011727	2.8261	2.8335	4864.77	4865.77	1.00	0.92	0.92	0.92	55	133.6
4-Jun-15	13:00	Fine	012194	2.8112	2.8156	4889.77	4890.77	1.00	0.96	0.96	0.96	57	76.7
4-Jun-15	14:27	Fine	011763	2.8446	2.8474	4890.77	4891.77	1.00	0.86	0.86	0.86	52	54.2
4-Jun-15	15:31	Fine	011760	2.8238	2.8248	4891.77	4892.77	1.00	0.86	0.86	0.86	52	19.3
9-Jun-15	13:00	Cloudy	011767	2.8420	2.8473	4916.77	4917.77	1.00	0.96	0.96	0.96	57	92.3
9-Jun-15	14:04	Cloudy	012135	2.8219	2.8260	4917.78	4918.78	1.00	1.06	1.06	1.06	64	64.4
9-Jun-15	15:12	Cloudy	012138	2.8222	2.8262	4918.78	4919.78	1.00	1.09	1.09	1.09	65	61.3
13-Jun-15	8:05	Cloudy	011997	2.8287	2.8321	4943.78	4944.78	1.00	0.96	0.96	0.96	57	59.2
13-Jun-15	9:15	Cloudy	011986	2.8122	2.8149	4944.78	4945.78	1.00	0.96	0.96	0.96	57	47.0
13-Jun-15	10:35	Cloudy	011989	2.8286	2.8313	4945.78	4946.78	1.00	1.01	1.01	1.01	61	44.6
19-Jun-15	11:00	Fine	011960	2.8182	2.8246	4946.83	4947.83	1.00	1.01	1.01	1.01	60	105.9
19-Jun-15	13:05	Fine	011963	2.8328	2.8407	4947.83	4948.83	1.00	0.95	0.95	0.95	57	137.9
19-Jun-15	14:56	Fine	011966	2.8172	2.8232	4948.83	4949.83	1.00	1.01	1.01	1.01	60	99.3
24-Jun-15	13:05	Rainy	012336	2.8304	2.8354	4984.82	4985.82	1.00	0.96	0.96	0.96	58	86.9
24-Jun-15	14:19	Rainy	012289	2.8095	2.8155	4985.82	4986.82	1.00	0.96	0.96	0.96	58	104.3
24-Jun-15	15:30	Rainy	012284	2.8282	2.8331	4986.82	4987.82	1.00	0.96	0.96	0.96	58	85.2



Location: CMA6a - WD2 PRE Office

Report on 24-hour TSP monitoring

Action Level - 187.3 $\mu\text{g}/\text{m}^3$
Limit Level - 260 $\mu\text{g}/\text{m}^3$

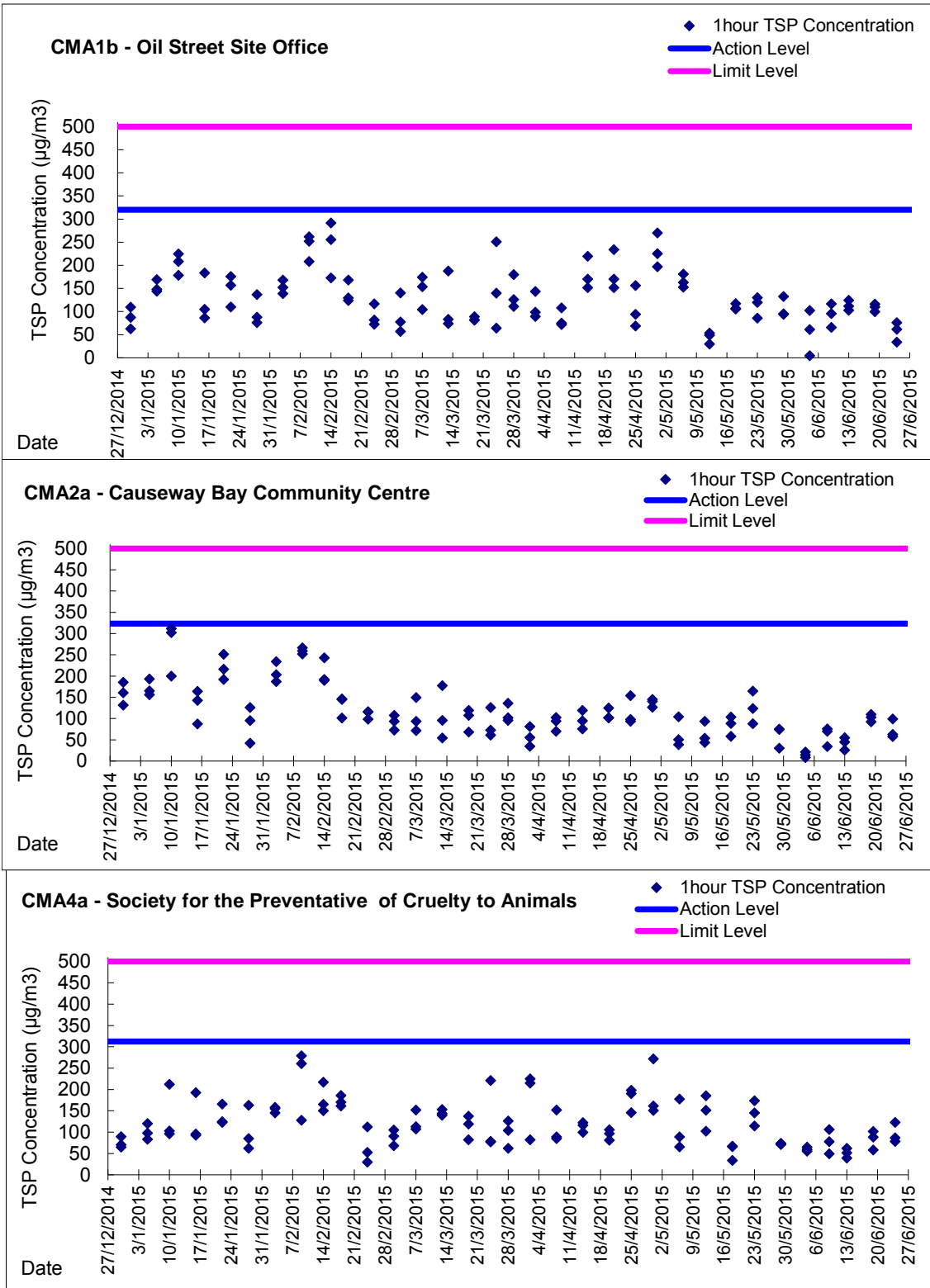
Date	Sampling Time	Weather Condition	Filter paper no.	Filter Weight, g		Elapse Time, hr		Sampling Time, hr	Flow Rate, m^3/min			Total Volume, m^3	TSP Level, $\mu\text{g}/\text{m}^3$
				Initial	Final	Initial	Final		Initial, Q_{si}	Final, Q_{sf}	Average		
28-May-15	8:00	Fine	012119	2.8315	2.9500	19945.52	19969.52	24.00	1.22	1.22	1.22	1757	67.4
3-Jun-15	8:00	Fine	011728	2.8214	2.9029	19972.53	19996.53	24.00	1.22	1.22	1.22	1760	46.3
8-Jun-15	8:00	Cloudy	011759	2.8149	2.8876	19999.53	20023.53	24.00	1.22	1.22	1.22	1758	41.3
12-Jun-15	8:00	Cloudy	011847	2.7204	2.8028	20026.53	20050.53	24.00	1.22	1.22	1.22	1756	46.9
18-Jun-15	8:00	Fine	012322	2.8364	2.9179	20053.62	20077.62	24.00	1.21	1.22	1.21	1749	46.6
23-Jun-15	8:00	Rainy	011980	2.8434	2.9434	20080.61	20104.61	24.00	1.22	1.22	1.22	1758	56.9

Report on 1-hour TSP monitoring

Action Level - 300.1 $\mu\text{g}/\text{m}^3$
Limit Level - 500 $\mu\text{g}/\text{m}^3$

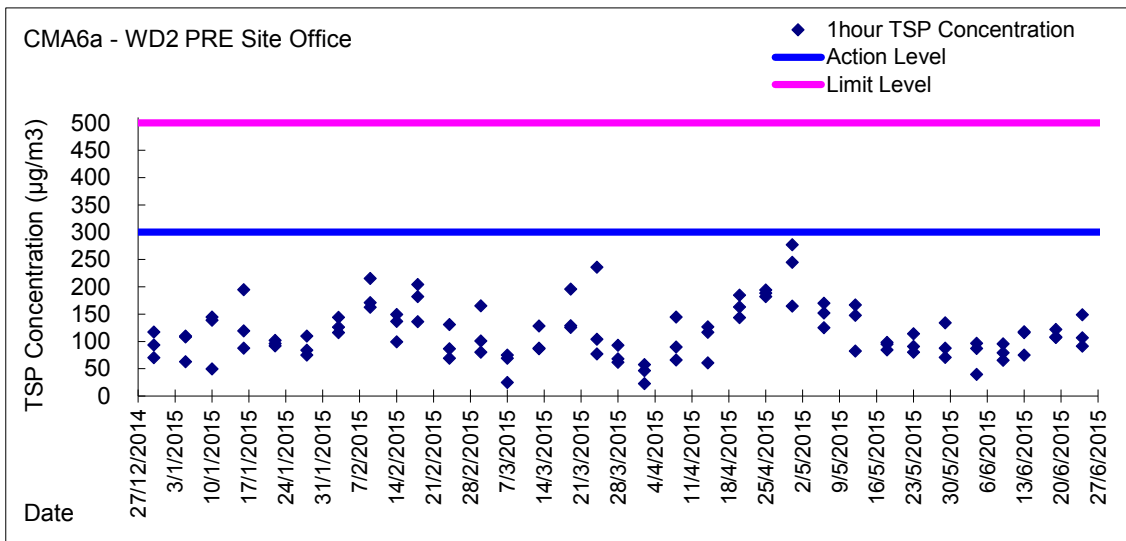
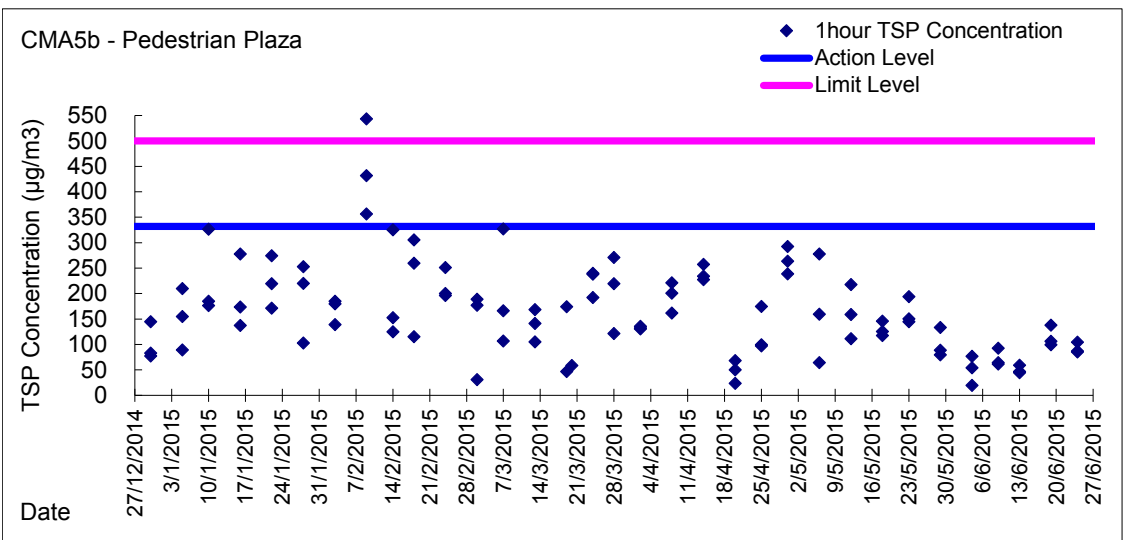
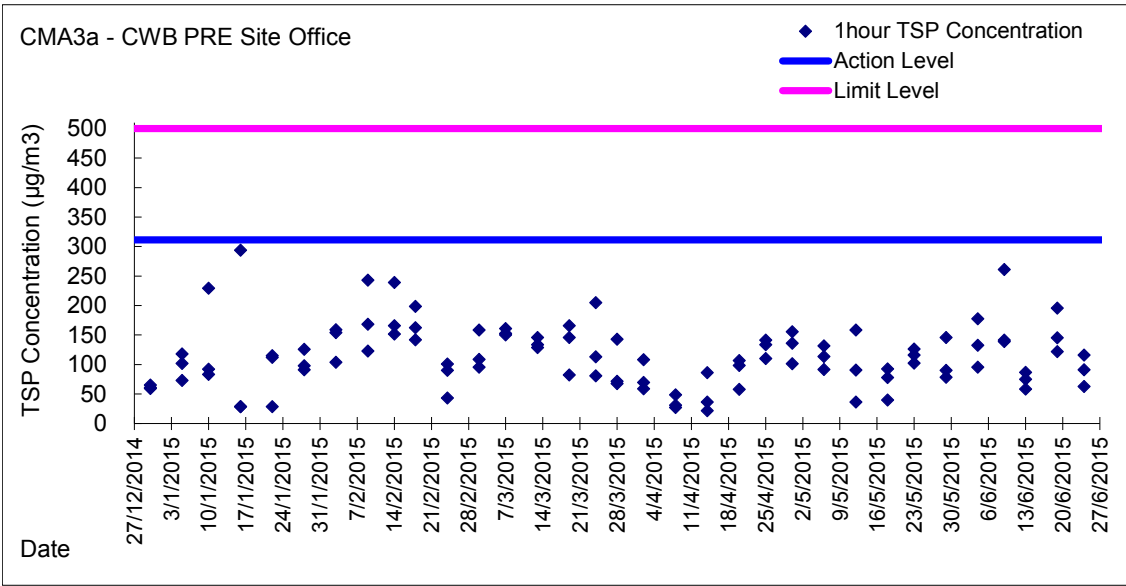
Date	Sampling Time	Weather Condition	Filter paper no.	Filter Weight, g		Elapse Time, hr		Sampling Time, hr	Flow Rate, m^3/min			Total Volume, m^3	TSP Level, $\mu\text{g}/\text{m}^3$
				Initial	Final	Initial	Final		Initial, Q_{si}	Final, Q_{sf}	Average		
29-May-15	10:30	Fine	012180	2.8259	2.8323	19969.53	19970.53	1.00	1.22	1.22	1.22	73	87.4
29-May-15	13:00	Fine	012183	2.8335	2.8387	19970.53	19971.53	1.00	1.22	1.22	1.22	73	71.0
29-May-15	14:02	Fine	011736	2.8400	2.8498	19971.53	19972.53	1.00	1.22	1.22	1.22	73	133.8
4-Jun-15	13:00	Fine	012193	2.7979	2.8043	19996.53	19997.53	1.00	1.22	1.22	1.22	73	87.3
4-Jun-15	14:10	Fine	011740	2.8184	2.8255	19997.53	19998.53	1.00	1.22	1.22	1.22	73	96.8
4-Jun-15	15:13	Fine	011762	2.8077	2.8106	19998.53	19999.53	1.00	1.22	1.22	1.22	73	39.6
9-Jun-15	13:00	Cloudy	011769	2.8282	2.8352	20023.53	20024.53	1.00	1.22	1.22	1.22	73	95.6
9-Jun-15	14:20	Cloudy	012137	2.8288	2.8336	20024.53	20025.53	1.00	1.22	1.22	1.22	73	65.5
9-Jun-15	15:25	Cloudy	011998	2.8152	2.8210	20025.53	20026.53	1.00	1.22	1.22	1.22	73	79.2
13-Jun-15	8:01	Cloudy	011775	2.8239	2.8325	20050.53	20051.53	1.00	1.22	1.22	1.22	73	117.7
13-Jun-15	9:25	Cloudy	011772	2.8384	2.8439	20051.53	20052.53	1.00	1.22	1.22	1.22	73	75.2
13-Jun-15	10:35	Cloudy	012326	2.8253	2.8338	20052.53	20053.53	1.00	1.22	1.22	1.22	73	116.3
19-Jun-15	10:40	Fine	011959	2.7991	2.8069	20077.62	20078.62	1.00	1.22	1.22	1.22	73	107.0
19-Jun-15	13:00	Fine	011961	2.8156	2.8235	20078.62	20079.62	1.00	1.22	1.22	1.22	73	108.4
19-Jun-15	15:07	Fine	011967	2.8150	2.8239	20079.62	20080.62	1.00	1.22	1.22	1.22	73	122.1
24-Jun-15	13:00	Rainy	012298	2.8307	2.8374	20104.61	20105.61	1.00	1.22	1.22	1.22	73	91.5
24-Jun-15	14:03	Rainy	012287	2.7979	2.8057	20105.61	20106.61	1.00	1.22	1.22	1.22	73	106.5
24-Jun-15	15:10	Rainy	012290	2.8090	2.8199	20106.61	20107.61	1.00	1.22	1.22	1.22	73	148.9

Graphic Presentation of 1 hour TSP Result



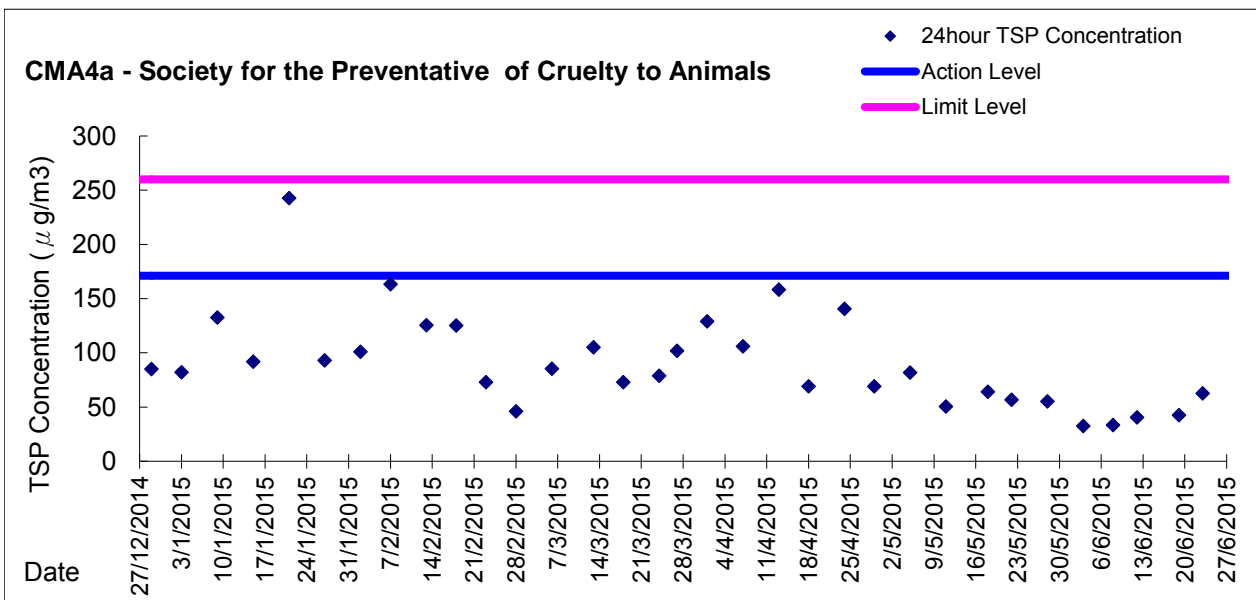
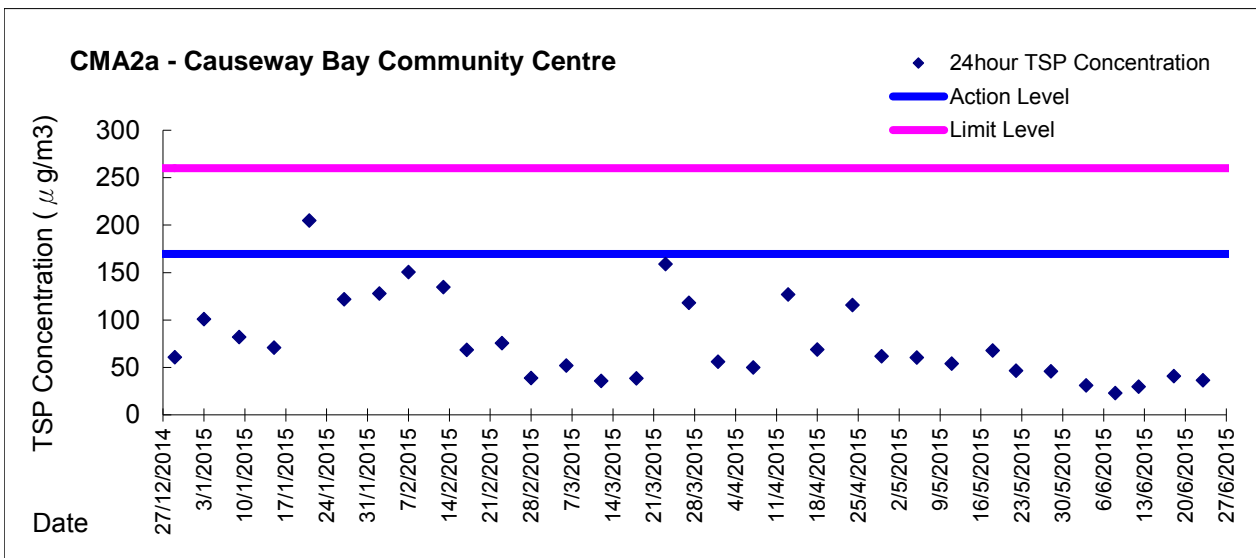
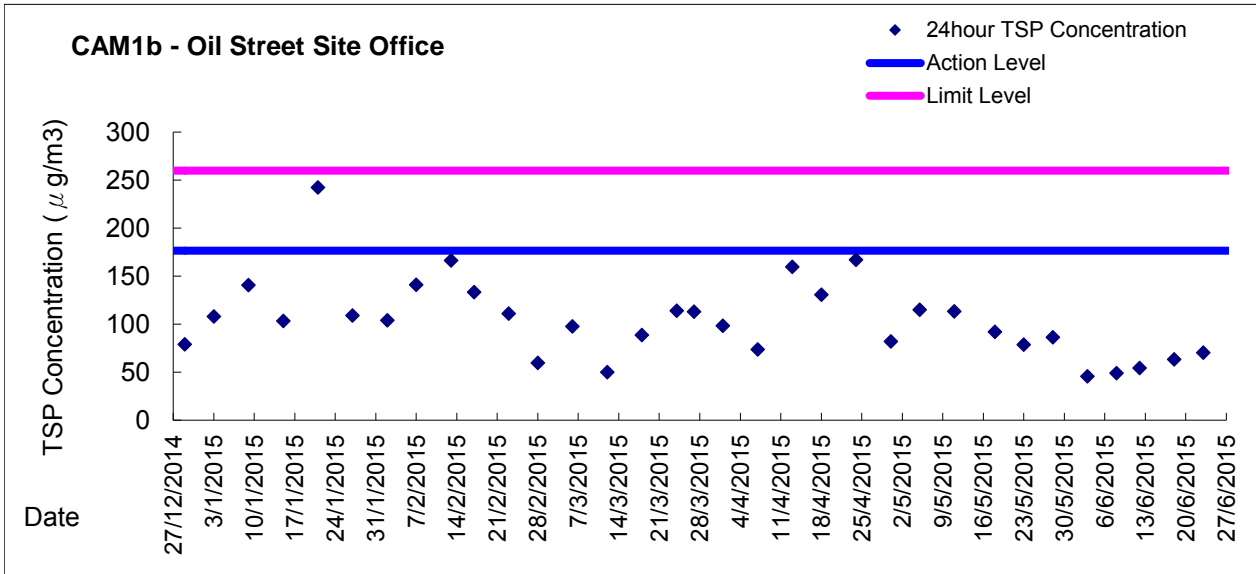


Graphic Presentation of 1 hour TSP Result





Graphic Presentation of 24 hour TSP Result



Graphic Presentation of 24 hour TSP Result

